



**YOUR PERFECTLY CLEARED
WAY IS OUR DESTINATION**



ADVANTAGE THROUGH INNOVATION

ROTARY SNOW PLOUGH

TABLE OF CONTENTS

ADVANTAGE THROUGH INNOVATION

- **WESTA FOR PROFESSIONALS**
 Advantage through innovation 02 - 03
- **THE ECONOMICAL STARTER MODEL**
 36 L - carrier vehicle power range, 20 - 35 HP 04 - 07
- **THE „BIG SMALL“ ONES**
 4550/550/5560/650 - carrier vehicle power range, 30 - 100 HP 08 - 13
- **THE TOUGH COMPACT CLASS**
 6570/7370/750 - carrier vehicle power range, 60 - 130 HP 14 - 19
- **THE ALLROUNDER**
 900/S/U/FA/SW - carrier vehicle power range, 90 - 220 HP 20 - 25
- **ONLY FOR HUGE MACHINES**
 1050/1050 FA - carrier vehicle power range, 150 - 380 HP 26 - 29
- **ONTO THE SLOPE**
 5528/6532/6544 / snow plough and transport buckets
 for piste caterpillar 30 - 33





WESTA FOR PROFESSIONALS

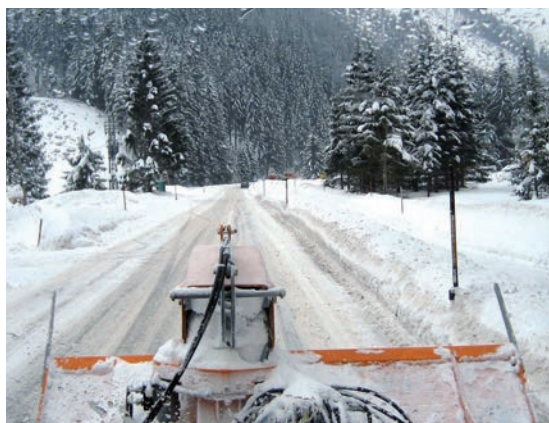
ADVANTAGE THROUGH INNOVATION

Suitable snow blowers for each vehicle

WESTA snow blowers are produced in Germany at highest quality standards and strictly using high-quality materials such as fine-grained steel.

Innovative developments, such as the turning system, the approach protection, the ejection chute „free view“ or the slide plate optional with structure bar, increase the over-all performance of the machines for the professional user.

Because of modular attachment systems, the blowers can be fitted optimally to various vehicles.



EJECTION CHUTE FREE VIEW PATENTED

SLIDE PLATE PATENTED

TURNING SYSTEM AND APPROACH PROTECTION PATENTED



36-L

THE ECONOMICAL STARTER MODEL

LOW WEIGHT AND MOST EFFICIENT

This snow plough needs less effort and guarantees uninterrupted operation by working with small tractors with 20 HP and upwards.

Different options and various drive solutions are available.

technical specifications

The powerful rotary snow plough for professionals



- type** 2-stage rotary plough and thrower
- ejection chute** hydraulically pivotable, 280°
- ejection flap** double-blend, hydraulically adjustable, 240°
- attachment** triangular attachment, optionally various other systems available
- drive** PTO shaft 1.000 U/rpm., turning left or right in direction of travel, **Drive reinforced**
- overload protection** by shear bolt clutch in PTO shaft

- special width** available on request
- basic configuration** unit ready for operation, including universal shaft and hydraulic flap

36-L

cylinder diameter 360 mm
thrower wheel diameter 420 mm

| type | order-nr. | working width | weight |
|-------------|-----------|---------------|--------|
| 36-L / 1200 | 23600001 | 1.200 mm | 225 kg |
| 36-L / 1400 | 23600002 | 1.400 mm | 260 kg |
| 36-L / 1600 | 23600003 | 1.600 mm | 285 kg |

drive

23600110 **hydrostatic drive** 40 l / min. gear engine complete with high-pressure hoses and hydraulic couplings fit to the vehicle

gear

23600105 **step-down gear** for tractors with PTO shaft speed of 2000 rpm. (is bidirectional and cannot be retrofitted)
 23600106 **step-up gear** for tractors with PTO shaft speed of 540 rpm. (is bidirectional and cannot be retrofitted)

others

63100025 **electromagnetic changeover valve** for operating 2 double-action functions with a double-action control unit, ready mounted to rotary snow plow + installation kit (cable-plug-switch) supplied for vehicle, without installation
 23600250 **running wheels** 1 pair for substituting skids delivered as standard, sturdy heavy-duty wheels d = 150 mm with height-adjusting crank, fitting into skid receiving lugs

36 L - hydraulic drive



36 L - gear box



36 L - changeover valve



36 L - running wheels





4550



550



5560



650

THE BIG „SMALL ONES“

COMPACT AND MOST EFFICIENT

No matter what kind of snow - with the compact snow ploughs **type 4550 to 650** for vehicles from 30 to 100 HP, you have a powerful, professional machine with trouble-free operation.

A robust, centered angular gear box transmits the power absolutely reliable and with high efficiency to the milling drum.

The ejection chutes are hydraulically rotating as standard and are available in different versions.

technical specifications

The powerful rotary snow plough for professionals

- type** 2-stage rotary plough and thrower
- ejection chute** hydraulically pivotable, 280°
- ejection flap** double-blend, manually adjustable, 240°, option: hydraulically adjustable
- attachment** 3-point CAT 1, optionally various other attachment systems available
- drive** PTO shaft 1.000 U/rpm. turning left or right (in direction of travel)
- overload protection** 4550 / 550 by shear bolt clutch in PTO shaft
5560 / 650 by cam type clutch
- special width** available on request
- basic configuration** unit ready for operation, including universal shaft and hydraulic flap



4550

cylinder diameter 450 mm
thrower wheel diameter 500 mm

| type | order-nr. | working width | weight |
|-------------|-----------|---------------|--------|
| 4550 / 600 | 24550016 | 600 mm | 275 kg |
| 4550 / 1000 | 24550001 | 1.000 mm | 295 kg |
| 4450 / 1200 | 24550002 | 1.200 mm | 305 kg |
| 4450 / 1400 | 24550003 | 1.400 mm | 310 kg |
| 4450 / 1500 | 24550004 | 1.500 mm | 320 kg |
| 4450 / 1600 | 24550006 | 1.600 mm | 335 kg |

5560

cylinder diameter 550 mm
thrower wheel diameter 600 mm

| type | order-nr. | working width | weight |
|-------------|-----------|---------------|--------|
| 5560 / 1500 | 25500015 | 1.500 mm | 400 kg |
| 5560 / 1600 | 25500016 | 1.600 mm | 430 kg |
| 5560 / 1800 | 25500018 | 1.800 mm | 490 kg |
| 5560 / 2000 | 25500020 | 2.000 mm | 560 kg |
| 5560 / 2100 | 25500021 | 2.100 mm | 585 kg |

550

cylinder diameter 550 mm
thrower wheel diameter 500 mm

| type | order-nr. | working width | weight |
|------------|-----------|---------------|--------|
| 550 / 1100 | 25500001 | 1.100 mm | 350 kg |
| 550 / 1300 | 25500002 | 1.300 mm | 360 kg |
| 550 / 1500 | 25500003 | 1.500 mm | 380 kg |
| 550 / 1700 | 25500004 | 1.700 mm | 400 kg |

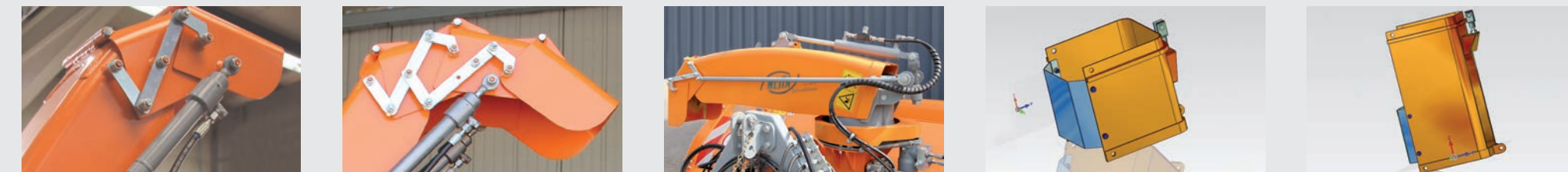
650

cylinder diameter 650 mm
thrower wheel diameter 600 mm

| type | order-nr. | working width | weight |
|------------|-----------|---------------|--------|
| 650 / 1400 | 26500001 | 1.400 mm | 510 kg |
| 650 / 1500 | 26500002 | 1.500 mm | 525 kg |
| 650 / 1600 | 26500003 | 1.600 mm | 545 kg |
| 650 / 1800 | 26500004 | 1.800 mm | 570 kg |
| 650 / 2200 | 26500008 | 2.200 mm | 670 kg |

ejection chute

- 22500001 **hydraulic ejection flap** with cylinder for infinitely variable adjustment of throwing range (complete with hoses and couplings)
- 22500002 **hydraulic 3-section flap** for extremely short ejection distances directly adjacent to plough
- 22500005 **chute for clear visibility (patented)** ejection chute with multiple shield- swings away hydraulically
- 22500025 **ejection chute lengthening 250 mm** lengthening to screw in, snow ejection height ca. 1.700 mm above ground
- 22500050 **ejection chute lengthening 500 mm** lengthening to screw in, snow ejection height ca. 1.950 mm above ground
- 22500080 **long loading chute** for loading snow onto vehicles, snow ejection height 2.500 mm above ground



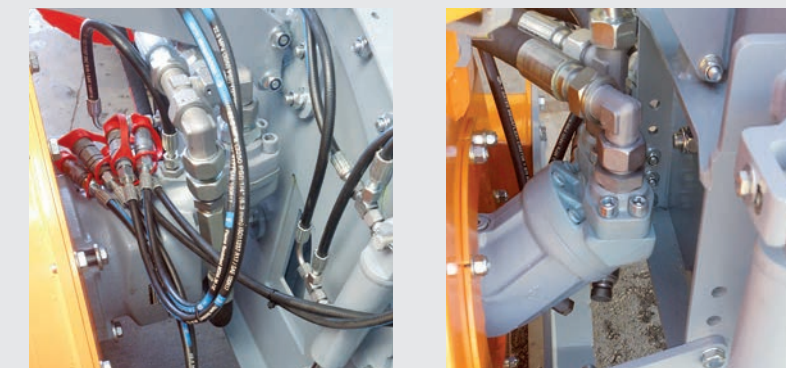
drive

For hydrostatic drives of type 4550, 550, 5560 and 650 we use axial-piston engines of well-known European manufacturers. The engines provide high torque, excellent efficiency and high reliability under hard and continuous operation.

The engines have to match the hydraulic of the vehicle. According to information about pressure and flow rate of the vehicle hydraulic, we choose the right engine. They are directly flange-mounted to the thrower wheel; completely with high-pressure hoses and hydraulic couplings.

To power the type 650 hydrostatically, the following minimum requirements must be met:

- hydraulic pump min. 80 l / min. at 220 bar - max 150 l/min at 350 bar
- separate leakage oil recirculation, pressureless to the hydraulic tank



| | 4550 | 550 | 5560 | 650 |
|------------------|----------|----------|----------|----------|
| 40 l / min..... | 24500170 | --- | --- | --- |
| 60 l / min..... | 24500175 | 25500110 | 25600110 | --- |
| 80 l / min..... | 24500180 | 25500111 | 25600111 | --- |
| 100 l / min..... | 25500112 | --- | 25600112 | 26500112 |
| 150 l / min..... | --- | --- | --- | 26500114 |

hydraulic level adjustment

| | | |
|----------|----------|-------------------------------------------------------------------|
| 24500108 | for 4550 | for tilting the plough at right angels to the direction of travel |
| 25500104 | for 550 | for tilting the plough at right angels to the direction of travel |
| 25600160 | for 5560 | for tilting the plough at right angels to the direction of travel |
| 26500160 | for 650 | for tilting the plough at right angels to the direction of travel |

slide plate

| | | |
|----------|-------------|---------------------------------------------|
| 25500616 | 5560 / 1600 | optionally with rail to roughen the surrace |
| 25500618 | 5560 / 1800 | optionally with rail to roughen the surrace |
| 25500620 | 5560 / 2000 | optionally with rail to roughen the surrace |

Attachment - adapter plates are available for many other vehicle

| | | |
|----------|---------------------------------------|------------------------------------------------------|
| 25500188 | adapter plate wheel loader | for attaching plough to wheel loader* |
| 24545310 | adapter plate with roller compensator | 200 mm for free horizontal rotary snow plow movement |

triangular attachments

| | | |
|----------|-----------------------|-----------------------------------------------|
| 25500207 | triangular attachment | Cat 0 - small 170 mm short |
| 25500208 | triangular attachment | Cat 0 - small 270 mm long |
| 25500225 | triangular attachment | Cat 0 - communal (big triangular) 270 mm long |

Transfer and step-down gear STG 74

| | | |
|----------|----------|---------------------------------|
| 66010345 | for 5560 | PTO shaft 540 U / rpm., 1:1,33 |
| 66010346 | for 5560 | PTO shaft 1.000 U/ rpm., 1:1,33 |

snowcutter

| | | |
|----------|----------|-------------------|
| 24500260 | for 4550 | rugged snowcutter |
| 25500260 | for 550 | rugged snowcutter |
| 25500260 | for 5560 | rugged snowcutter |
| --- | for 650 | rugged snowcutter |

turning system

| | | |
|----------|----------------------------------------|------------------------|
| 25505100 | turning system | for 5560 / 1800 - 2100 |
| 26505100 | turning system | for 650 / 1800 - 2100 |
| 26542100 | attachable frame with hydr. adjustment | for 5560 + 650 |

cantilever snow plough and thrower 4550 / 600 AL

| | | |
|----------|---------------|-----------------------------------------------------------------------------------------------------------------------------|
| 24500008 | 4550 / 600 AL | working width 600 mm, unit ready for operating, adapted to cutting cantilever, weight: 285 kg hydrostatic drive: VOAC 60 |
|----------|---------------|-----------------------------------------------------------------------------------------------------------------------------|

others

| | | |
|----------|--------------------------------------|--------------------------------------------------------------------------------------------------------------------------------------------------------|
| 63100021 | electromagnetic changeover valve (2) | for operating 2 or 3 double-action functions with a double-action control unit, ready mounted to |
| 63100031 | electromagnetic changeover valve (3) | rotary snow plow + installation kit (cable-plug-switch) supplied for vehicle, without installation |
| 25500250 | running wheels | 1 pair for substituting skids delivered as standard, sturdy heavy-duty wheels d = 150 mm with height-adjusting crank, fitting into skid receiving lugs |

5560 hydraulic level adjustment



650 hydraulic level adjustment



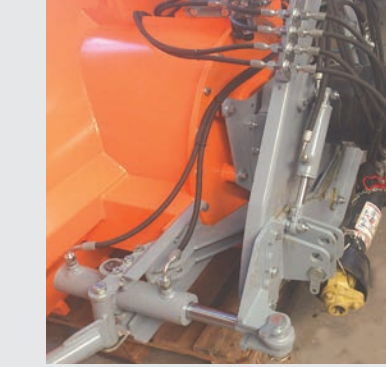
slide plate



structure bar (optional)



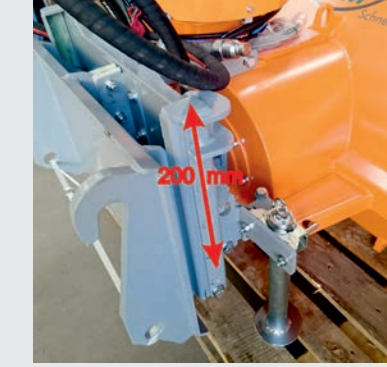
turning system



adapter plate wheel loader



adapter plate with roller compensator for wheel loader



attachable frame with hydraulic lateral displacement



snowcutter



4550 / 600 AL - cantilever snow plough and thrower





6570



7370



750

THE TOUGH COMPACT CLASS

COMPACT AND MOST EFFICIENT

The proven snow ploughs convince by great clearance capacity and the flexible attachment system. The comprehensive options set no limits on upgrade.

The snow plough type **6570** was revised completely. The bigger body now allows even higher snow levels to be cleared. The side-wheels are bolted and many other details were optimised.

NEW!

The newly developed snow plough type **7370** convinces in even greater clearing width and in the possibility to drive with higher speed. This plough is more efficient than many others.

NEW!

technical specifications



The powerful rotary snow plough for professionals

6570

| | |
|------------------------|--------|
| cylinder diameter | 650 mm |
| thrower wheel diameter | 700 mm |

| type | order-nr. | working width | weight |
|-------------|-----------|---------------|--------|
| 6570 / 1500 | 26500039 | 1.500 mm | 610 kg |
| 6570 / 1600 | 26500023 | 1.600 mm | 660 kg |
| 6570 / 1800 | 26500036 | 1.800 mm | 680 kg |
| 6570 / 2200 | 26500032 | 2.200 mm | 720 kg |
| 6570 / 2300 | 26500033 | 2.300 mm | 780 kg |

7370

| | |
|------------------------|--------|
| cylinder diameter | 730 mm |
| thrower wheel diameter | 700 mm |

| type | order-nr. | working width | weight |
|-------------|-----------|---------------|----------|
| 7370 / 1600 | 27300005 | 1.600 mm | 680 kg |
| 7370 / 1800 | 27300006 | 1.800 mm | 780 kg |
| 7370 / 2200 | 27300001 | 2.200 mm | 920 kg |
| 7370 / 2300 | 27300003 | 2.300 mm | 980 kg |
| 7370 / 2500 | 27300007 | 2.500 mm | 1.080 kg |

750

| | |
|------------------------|--------|
| cylinder diameter | 750 mm |
| thrower wheel diameter | 700 mm |

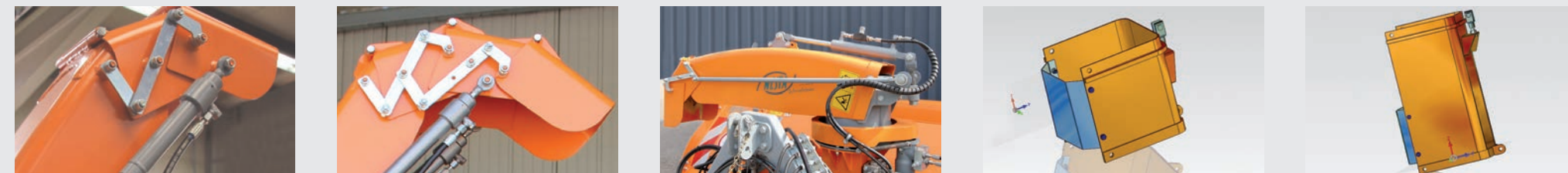
| type | order-nr. | working width | weight |
|------------|-----------|---------------|----------|
| 750 / 1600 | 27500003 | 1.600 mm | 820 kg |
| 750 / 2000 | 27500007 | 2.000 mm | 930 kg |
| 750 / 2200 | 27500001 | 2.200 mm | 990 kg |
| 750 / 2500 | 27500006 | 2.500 mm | 1.030 kg |

- type** 2-stage rotary plough and thrower
- ejection chute** hydraulically pivotable, 280°
- ejection flap** double-blend, manually adjustable, option: hydraulically adjustable
- attachment** 3-point CAT 1+2, option: various other attachment systems available
- Drive** **6570 / 7370** PTO shaft 1.000 U/rpm, turning left or right (in direction of travel), step-down gear included in basic price
- **750** PTO shaft 540 U/rpm, turning right in direction of travel optionally turning left, at PTO shaft 1.000 U/rpm. gear 275 00 107 / -110 / -105 necessary
- Overload protection** **6570 / 7370** by cam type clutch and shear bolt clutch in PTO shaft
- **750** by cam type clutch in each plough cylinder and shear bolt clutch in PTO shaft
- special width** **6570** - available on request -> until 2.500 mm
- **7370** - available on request -> 1.300 and 1.500 mm

basic configuration unit ready for operation, including universal shaft and hydraulic flap

ejection chute

- 27500101 hydraulic ejection flap with cylinder for infinitely variable adjustment of throwing range (complete with hoses and couplings)
- 27501118 hydraulic 3-section flap for extremely short ejection distances directly adjacent to plough
- 27501120 chute for clear visibility (patented) ejection chute with multiple shield- swings away hydraulically
- 27501210 ejection chute lengthening 250 mm lengthening to screw in, snow ejection height ca. 2.200 mm above ground
- 27501215 ejection chute lengthening 500 mm lengthening to screw in, snow ejection height ca. 2.500 mm above ground
- 27500102 long loading chute for loading snow onto vehicles, snow ejection height 3.100 mm above ground



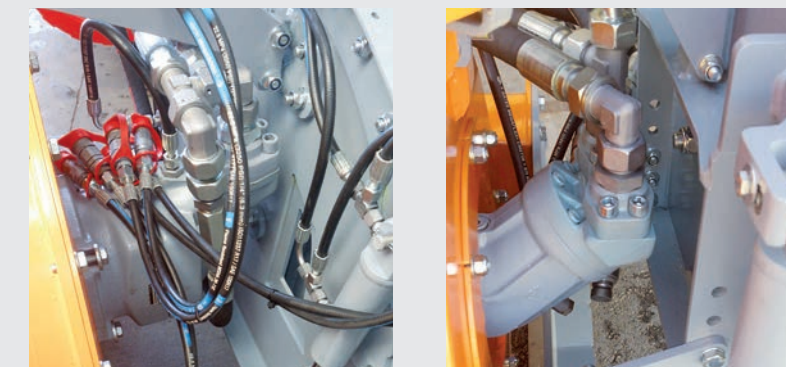
drive

For hydrostatic drives of type 6570, 7370 and 750 we use axial-piston engines of well-known European manufacturers. The engines provide high torque, excellent efficiency and high reliability under hard and continuous operation.

The engines have to match the hydraulic of the vehicle. According to information about pressure and flow rate of the vehicle hydraulic, we choose the right engine. They are directly flange-mounted to the thrower wheel; completely with high-pressure hoses and hydraulic couplings.

To power the type 6570 hydrostatically, the following minimum requirements must be met:

- hydraulic pump min. 80 l / min. at 220 bar - max 150 l/min at 350 bar
- separate leakage oil recirculation, pressureless to the hydraulic tank



| | 6570 | 7370 | 750 |
|-------------------|----------|----------|----------|
| 80 l / min. | 26500111 | --- | --- |
| 100 l / min. | 26500112 | 27300112 | --- |
| 150 l / min. | 26500114 | 27300114 | 27500106 |

hydraulic level adjustment

- 26500162 for 6570 for tilting the plough at right angles to the direction of travel
- 27300162 for 7370 for tilting the plough at right angles to the direction of travel
- for 750 for tilting the plough at right angles to the direction of travel

slide plate

- 26500616 6570 + 7370 / 1600 optionally with rail to roughen the surrace
- 26500620 6570 + 7370 / 2000 optionally with rail to roughen the surrace
- 26500622 6570 + 7370 / 2200 optionally with rail to roughen the surrace
- 26500623 6570 + 7370 / 2300 optionally with rail to roughen the surrace
- 26500625 6570 + 7370 / 2500 optionally with rail to roughen the surrace

Attachment - adapter plates are available for many other vehicle

- 26500230 hydraulic raising and lowering facility 6570 / 7370 for attaching EURO vehicle plate comprising: quick change plate, lifting cylinders, pendulum unit, transport brace, HP- hoses
- 26500280 hydraulic longitudinal pitch adjustment hydraulic upper with shutter block and high-pressure hoses for hydraulically adjusting the rotary snowplans
- 27500130 hydraulic raising and lowering facility (U) for attaching fixed EURO vehicle plate size 3 UNIMOG (U) or size 3 tractors
- 27500135 hydraulic raising and lowering facility (T) quick change plate, lifting cylinders, pendulum unit transport bruce, HP-hoses
- 27500280 hydraulic longitudinal pitch adjustment hydraulic upper with shutter block and high-pressure hoses for hydraulically adjusting the rotary snowplans
- 27540600 attachable frame with hydraulic adjustment, - 200 mm to both sides

Transfer and step-down gear for type 750

- 27500107 transfer and step-down gear STG 63 PTO shaft input height 750 mm over ground
- 29002110 transfer and step-down gear STG 74-1 PTO shaft input height 630 mm over ground
- 27502105 transfer and step-down gear MR 92 i = 2:1 PTO shaft input height 600 mm over ground, reversed direction of rotation

others

- 63100021 electromagnetic changeover valve (2) for operating 2 or 3 double-action functions with a double-action control unit, ready mounted to
- 63100031 electromagnetic changeover valve (3) rotary snow plow + installation kit (cable-plug-switch) supplied for vehicle, without installation
- 26500250 running wheels 6570 / 7370 1 pair for substituting skids delivered as standard, sturdy heavy-duty wheels
- 27500250 running wheels 750 d = 150 mm with height-adjusting crank, fitting into skid receiving lugs

triangular attachments

- 27500210 attachable frame with triangular attachment for mounting to standard attachment KAT 2

turning system

- 27305100 turning system for Typ 6570 / 7370
- 27505100 turning system for Typ 750

750 hydraulic level adjustment



6570 level adjustment



slide plate



structure bar



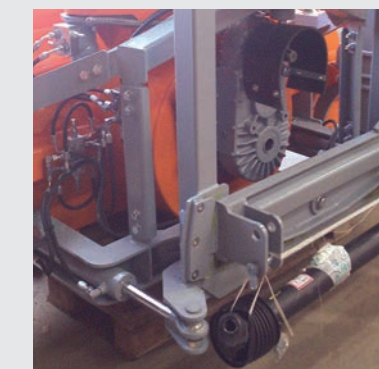
snowcutter (serie)



6570 / 7370 turning system



750 turning system



750 running wheel



750 hydr. lateral displacement



750 slide plate





900



900 S



900 FA



900 SW

THE ALLROUNDER

COMPACT AND POWERFUL

The rotary snow plough of the series 900 are professional snowblowers and constructed for tough and continuous operation.

Compact and very rugged they have high snow clearing capacities. The series of type 900 were tested at hard mountain passes and have proven themselves.

technical specifications



The powerful rotary snow plough for professionals

900

| | |
|------------------------|--------|
| cylinder diameter | 900 mm |
| thrower wheel diameter | 850 mm |

| type | order-nr. | working width | weight |
|-------------|-----------|---------------|----------|
| 900 / 1600 | 29000016 | 1.600 mm | 1.210 kg |
| 900 / 2000 | 29000020 | 2.000 mm | 1.230 kg |
| 900 / 2300* | 29000003 | 2.300 mm | 1.250 kg |
| 900 / 2600* | 29000006 | 2.600 mm | 1.320 kg |
| 900 / 2700* | 29000009 | 2.700 mm | 1.380 kg |

*Hydraulic level adjustment is in these types of series

technical specifications for 900 FA and 900 SW



900 FA

| | |
|------------------------|--------|
| cylinder diameter | 900 mm |
| thrower wheel diameter | 850 mm |

| type | order-nr. | working width | weight |
|----------------|--------------|---------------|----------|
| 900 / 2600-FA | 29000006-FA | 2.600 mm | 1.580 kg |
| 900 / 2600-FAS | 29000009-FAS | 2.600 mm | 1.820 kg |

working width (extra charge) 2.700 mm

| | |
|----------------|----------------------------------------------------------------------|
| type | 2-stage rotary plough and thrower |
| ejection chute | hydraulically pivotable, 240° |
| ejection flap | manually adjustable, option: hydraulically adjustable |
| attachment | 900 U - double blend hydraulically |
| drive | 3-point CAT 2, optionally various other attachment systems available |
| | 900 - PTO shaft 540 U/rpm. |
| | turning right in direction of travel, optionally turning left |
| | 900 S - PTO shaft 1.000 U/rpm., |
| | step-down gear 350 PS resilient attached |
| | 900 U - front PTO 1.000 U/rpm., |
| | transfer and step-down gear resilient 280 HP |
| | PTO shaft 1.000 U/rpm. step-down gear necessary |
| | PTO shaft 1.000 U/rpm. with optionally gear |

Overload protection by means of an automatic wedge clutch in each plough cylinder
 900 U by means of an automatic overload clutch in each plough cylinder

Level adjustment 10° to both sides

special width available on request

basic configuration unit ready for operation, including universal shaft and hydraulic flap

900 S

| | |
|------------------------|--------|
| cylinder diameter | 900 mm |
| thrower wheel diameter | 850 mm |

| type | order-nr. | working width | weight |
|--------------|------------|---------------|----------|
| 900 / 2600-S | 29000006-S | 2.600 mm | 1.460 kg |
| 900 / 2700-S | 29000009-S | 2.700 mm | 1.520 kg |

The transfer gear is included in the price

900 U for 400 / 500 Unimog

| | |
|------------------------|--------|
| cylinder diameter | 900 mm |
| thrower wheel diameter | 850 mm |

| type | order-nr. | working width | weight |
|-------------|------------|---------------|----------|
| 900 / 2600U | 29000006-u | 2.600 mm | 1.650 kg |

Release of the attachment by Daimler AG for UNIMOG U500 and U400 with real ballasting

900 SW

| | |
|--------------------------|-------------------------------------------------------------------|
| type | 1-stage cylinder plough |
| height of front building | 1.350 mm |
| ejection flap | double blend manually adjustable, optionally hydraulic adjustment |

attachment EURO-plate 3 or 5
 (optionally various other attachment systems available)
 - parallel-lifting system 450 mm lift
 (optional 3-point attachment CAT 2)

drive PTO shaft 1.000 U/rpm.

option hydraulic side adjustment 250 mm to the right side

900 SW side-wall rotary snow plough

| | |
|-------------------|--------|
| cylinder diameter | 900 mm |
|-------------------|--------|

Lift-System EURO 3 / 5

| type | order-nr. | working width | weight |
|--------|-----------|---------------|----------|
| 900 SW | 29300030 | 2.200 mm | 1.380 kg |

3-Point-Attachment

| type | order-nr. | working width | weight |
|--------|-----------|---------------|----------|
| 900 SW | 29300032 | 2.200 mm | 1.250 kg |

*working width plough cylinder 1.250 mm with feeder blade 2.200 mm serie
 plough cylinder 1.250 mm with feeder blade 2.400 mm extra charge

ejection chute

- 29000101..... hydraulic ejection flap..... with cylinder for infinitely variable adjustment of throwing range (complete with hoses and couplings)
- 29001118..... hydraulic 3-section flap..... for extremely short ejection distances directly adjacent to plough
- 29001120..... chute for clear visibility (patented)..... ejection chute with multiple shield- swings away hydraulically
- 29000225..... ejection chute lengthening 500 mm..... lengthening to screw in, snow ejection height ca. 3.100 mm above ground
- 29000102..... long loading chute..... for loading snow onto vehicles, snow ejection height 3.350 mm above ground



Attachment - adapter plates are available for many other vehicle

- 29000104..... hydraulic raising and lowering facility (U)..... for attaching fixed EURO vehicle plate size 3 UNIMOG (U) or size 3 tractors
- 29000106..... hydraulic raising and lowering facility (T)..... quick change plate, lifting cylinders, pendulum unit transport bruce, HP-hoses
- 29000319..... hydraulic longitudinal pitch adjustment..... hydraulic upper with shutter block and high-pressure hoses for hydraulically adjusting the rotary snowplans
- 29040600..... attachable frame..... with hydraulic adjustment - 200 mm to both sides

others

- 63100021..... electromagnetic changeover valve (2)..... for operating 2 or 3 double-action functions with a double-action control unit, ready mounted to
- 63100031..... electromagnetic changeover valve (3)..... rotary snow plow + installation kit (cable-plug-switch) supplied for vehicle, without installation
- 29000250..... running wheels (d = 250 mm)..... 1 pair for substituting skids delivered as standard sturdy heavy-duty wheels d = 250 mm with height-adjusting-crank, fitting into skid receiving lugs

drive

available..... hydrostatic drive with high effects..... with radial piston engine fitted to the hydraulic facts of the vehicle

turning system

29005100..... turning system..... for type 900, not available for type 900 U / type 900 SW

Transfer and step-down gear for type 900 / 900 FA

- 29000109..... transfer and step-down gear STG 63..... PTO shaft input height 800 mm over ground
- 29002108..... transfer and step-down gear STG 74-1..... PTO shaft input height 800 mm over ground



900 turning system

Option: hydraulically skid

900 hydraulic raising and lowering facility

transfer gear long

transfer gear short

900S gear box

900 attached frame with hydraulic adjustment

900 wheel loader

900 U drive

900 SW drive



1050

1050 FA

ONLY FOR HUGE MACHINES

GREAT, HEAVY AND HARD-LINE

This snowblower for carrier vehicles 200 - 400 HP engine output coped large amounts of snow.

The optimized geometry ejecter located power efficiency at highest level.

Robust and durable under the toughest conditions!

technical specifications

The powerful rotary snow plough for professionals

- type** 2-stage rotary snow plough and thrower
- **1050 FA** - with hydraulically rotating ejection chute for free ejection
- to both sides or through ejection flap
- ejection chute** hydraulically pivotable, 240°
- Auswurfschacht** **1050 FA** - hydraulically pivotable, 45° to both sides
- ejection flap** hydraulically adjustable
- attachment** 3-point CAT 2 + 3, optionally various other attachment systems available
- drive** PTO shaft 1.000 U/rpm., turning right in direction of travel, optionally turning left
- overload protection** by means of an automatic overload clutch in each plough cylinder
- Level adjustment** 10° to both sides

Basic configuration unit ready for operation, including universal shaft and hydraulic flap

- note**..... fitted with transfer and step-down gear unit for loading of up 350 HP
- hydrostatic drive for type 1050, radial piston engine, flanged directly th the thrower wheel,
- type of engine matched to hydraulic output, at least 250 l/m - 300 bar
- adaptions** for different vehicles will be rated and costed as required.



1050

cylinder diameter 1.050 mm
thrower wheel diameter 1.000 mm

| type | order-nr. | working width | weight |
|-------------|-----------|---------------|----------|
| 1050 / 2700 | 29500010 | 2.700 mm | 1.520 kg |
| 1050 / 2900 | 29500020 | 2.900 mm | 1.620 kg |

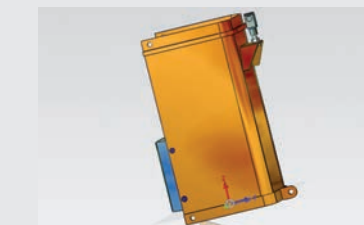
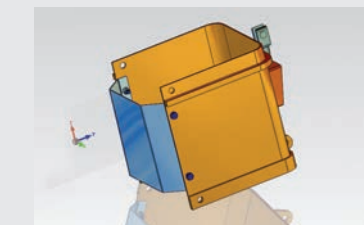
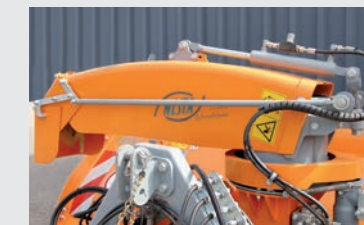
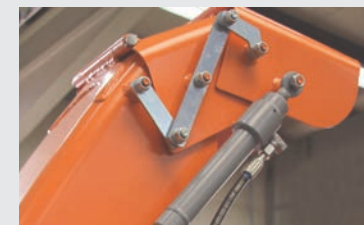
1050 FA

cylinder diameter 1.050 mm
thrower wheel diameter 1.000 mm

| type | order-nr. | working width | weight |
|----------------|-------------|---------------|----------|
| 1050 / 2700 FA | 29500010-fa | 2.700 mm | 2.010 kg |
| 1050 / 2900 FA | 29500020-fa | 2.900 mm | 2.270 kg |

ejection chute

- 29500101 hydraulic ejection flap with cylinder for infinitely variable adjustment of throwing range (complete with hoses and couplings)
- 29522111 hydraulic 3-section flap for extremely short ejection distances directly adjacent to plough
- 29500225 ejection chute lengthening 500 mm lengthening to screw in, snow ejection height ca. 3.200 mm above ground
- 29500102 long loading chute for loading snow onto vehicles, snow ejection height 3.400 mm above ground
- 29500219 hydraulic tringed down size for turning the ejection chute for transport drive



Attachment

- 29500350 parallel lift system attachment for EURO-vehicle plate size 3
- 29500352 parallel lift system attachment for EURO-vehicle plate size 5
- 29540600 attachable frame with hydraulic adjustment - 200 mm to both sides

others

- 63100021 electromagnetic changeover valve (2) for operating 2 or 3 double-action functions with a double-action control unit, ready mounted to
- 63100031 electromagnetic changeover valve (3) rotary snow plow + installation kit (cable-plug-switch) supplied for vehicle, without installation
- 29500255 running wheels (d = 265 mm) 1pair for substituting skids delivered as standard sturdy heavy-duty wheels with height-adjusting-clark, fitting into skid receiving lugs

running wheel



parallel lift system



turning system



hydraulic tringed down size





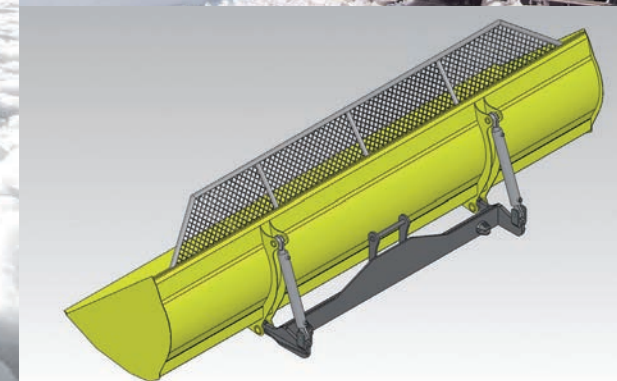
5528



6532



6544

TRANSPORT
BUCKET

ONTO THE SLOPE

COMPACT AND POWERFUL

Two stage rotary snow plough with 2 ejection chutes front mounting on snow caterpillars for efficient snow drift.

- from the runway to the runway mid-edges
- uniform distribution of snow on the slope
- extraction and distribution of snow depot
- distribution/structural improvement of artificial snow
- snow removal of parking zone
- great casting distance up to 50 meters

technical specifications



The powerful rotary snow plough for professionals

5528

| | | | |
|------------------------|------------------|----------------------|---------------|
| cylinder diameter | 600 mm | | |
| thrower wheel diameter | 550 mm | | |
| type | order-nr. | working width | weight |
| 5527 | 25500095 | 2.700 mm | 760 kg |
| 5528 | 25500096 | 2.888 mm | 810 kg |

6532

| | | | |
|------------------------|------------------|----------------------|---------------|
| cylinder diameter | 650 mm | | |
| thrower wheel diameter | 700 mm | | |
| type | order-nr. | working width | weight |
| 6532 | 26500095 | 3.200 mm | 1.200 kg |

with lateral positioning facility - 700 mm to both sides, 4.600 mm total working width

6544

| | | | |
|------------------------|------------------|----------------------|---------------|
| cylinder diameter | 650 mm | | |
| thrower wheel diameter | 700 mm | | |
| type | order-nr. | working width | weight |
| 6544 | 26500090 | 4.400 mm | 1.265 kg |

- type 2-stage rotary snow plough and thrower
- ejection chute 2 ejection chutes independence, hydraulically pivoting 240°
- ejection wheels 2
- ejection flap hydraulically adjustable, 3-segmented chute
- attachment quick release system Kässbohrer, other systems from other manufacturers available
- drive hydraulic, 2 axial piston engine
- Overload protection by means of automatic cam-type cut out clutches in front of each transfer gear box

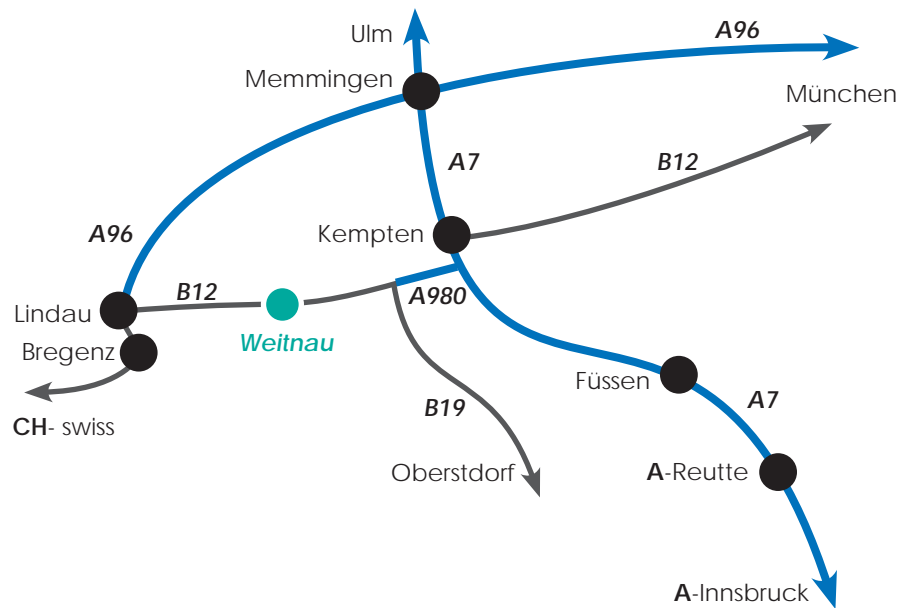
basic configuration unit ready for operation, including and hydraulic flap



SNOW AND MATERIAL TRANSPORT BUCKET for piste caterpillars

| type | order-nr. | working width | tilt angel | weight | material | scraper | adaption |
|---------|-----------|---------------|------------|--------|----------------------------|--------------|-------------------------------------|
| 2,5 cbm | 20200201 | 4.000 mm | 80° | 320 kg | fine-grained steel QSTE690 | exchangeable | available for all established |
| 1,6 cbm | 20200210 | 2.500 mm | 80° | 260 kg | fine-grained steel QSTE690 | exchangeable | piste caterpillars (for both sizes) |





WESTA GmbH Schneeräummaschinen
Am Kapf 6 • D-87480 Weitnau

☎ +49 83 75 / 531
☎ +49 83 75 / 532
✉ info@westa.de
www.westa.de



Konstruktion & Entwicklung
von Komponenten für den
Winterdienst & Pistenservice

- Sonderkonstruktionen
- CNC-Brennschneidbetrieb
- CNC Blechbearbeitung

Computer-aided design (CAD) and
development of components for
snow management on roads and pistes

- Customised designs
- CNC flame-cutting shop
- CNC sheet metal working

Construction CAO et études des composants
relatifs au service d'hiver et à l'entretien des
pistes

- Constructions spéciales
- Oxycoupage CNC
- Traitement CNC des tôles

Progettazione CAD e sviluppo di elementi
per il servizio d'inverno su strade e piste

- Costruzioni speciali
- Saldatura ossigeno
- CNC - Lavorazione CAD delle lamiere