



CHECKERS

Justrite Safety Group

**LINEBACKER® HEAVY-DUTY
5-CHANNEL CABLE PROTECTOR**
PRODUCT INFORMATION BROCHURE





PICTURED: CP5X125 IN-USE (LEFT)
CP5X125 IN USE (TOP)

Checkers™ cable management offers the most extensive line of high-performance cable/hose protection products in the world. These durable cable protection systems provide a safer method of passage for pedestrian traffic, vehicles and heavy-duty equipment while protecting valuable electrical cables, cords and hose lines from damage.

To fit the needs of a wide variety of applications, we offer lidded models, drop-over models, and low-profile models constructed from all-weather polyurethane. We also offer rubber duct models for light applications.

- **World's largest cable protector manufacturer**
- **Checkers™ cable management systems are manufactured in the USA in Broomfield, CO**
- **We offer extensive accessories, such as ADA/DDA compliant access ramps, protector bridges, 45° & 90° turns and end caps**
- **Polyurethane construction is lighter and more durable than rubber imitations in extreme weather conditions**
- **Satisfies state and federal regulatory agencies**
- **Customized solutions, including logos molded into the product**
- **Multiple channel options so each cable and hose can have its own dedicated channel**
- **Non-conductive material insulates and protects cords/cable, as well as people**
- **Universal safety colors alerting all type of traffic to the product's presence**

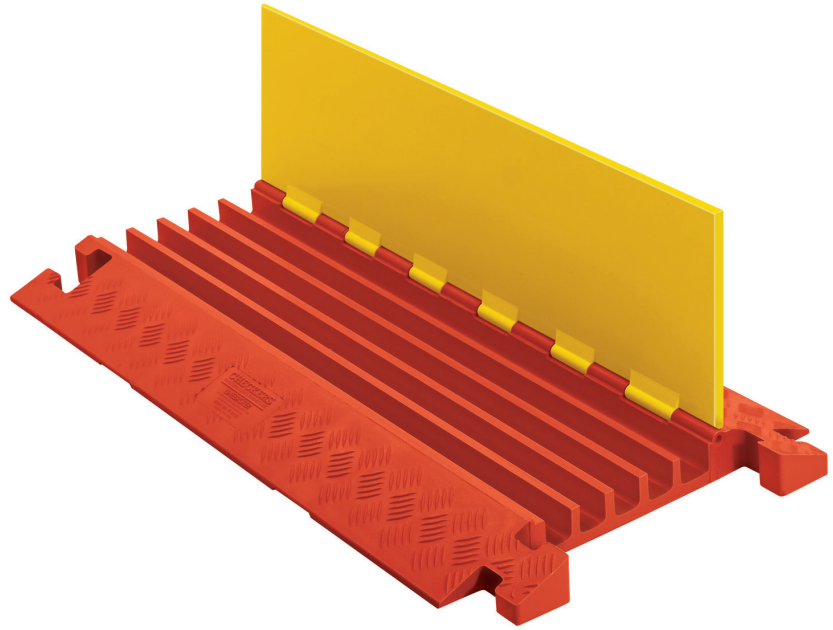
PRODUCT INFORMATION

LINEBACKER® HEAVY DUTY 5-CHANNEL CABLE PROTECTOR with hinged lid provides a safer crossing for vehicles and pedestrian traffic while protecting valuable electrical cables and hose lines from damage in extreme weather conditions and work environments.

Material: UV-stabilized polyurethane

- Protects cables and hoses up to 1.3-in outside dia.
- Patented T-connectors to extend to any length
- Reinforced hinged lid for easy cable placement
- All-weather polyurethane construction
- Thick lid and base allow for high volume of traffic
- Modular interlocking design makes setting up, dismantling and storing the product simple and straightforward
- Load capacity of 40,300 lbs./Axle (18,280 kg)

⚠ WARNING: This product can expose you to chemicals including Carbon Black, Titanium Dioxide, Formaldehyde, and Benzyl Butyl Phthalate, which are known to the State of California to cause cancer and birth defects or other reproductive harm. For more information go to www.P65Warnings.ca.gov.



MODEL: CP5X125

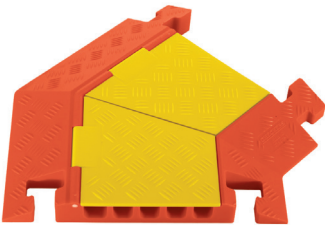
APPLICATIONS

- Civil Engineering and Construction
- Manufacturing
- Military Sites
- Infrastructure and Utilities Maintenance
- Transmission
- Heavy Equipment Areas

ACCESSORIES AND SPECIFICATIONS

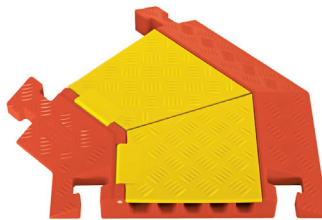
45° RIGHT TURN

MODEL: CPT5X125-R



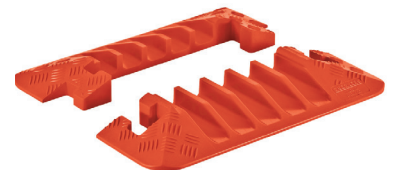
45° LEFT TURN

MODEL: CPT5X125-L



END CAPS (Pair Only)

MODEL: CPEC5X125



Model	Length	Width	Height	Channel Width	Maximum Outside Diameter	Weight
CP5X125	36 in. (91.4 cm)	20 in. (50.8 cm)	2.31 in. (5.72 cm)	1.35 in. (3.43 cm)	1.35 in. (3.43 cm)	25 lb. (11.3 kg)
CPT5X125-R	25 (63.5 cm)	20 in. (50.8 cm)	2.31 in. (5.72 cm)	1.35 in. (3.43 cm)	1.35 in. (3.43 cm)	13 lb. (5.9 kg)
CPT5X125-L	25 (63.5 cm)	20 in. (50.8 cm)	2.31 in. (5.72 cm)	1.35 in. (3.43 cm)	1.35 in. (3.43 cm)	13 lb. (5.9 kg)
CPEC5X125-GP	7.5 in. (19 cm)	20 in. (50.8 cm)	2.31 in. (5.72 cm)	1.35 in. (3.43 cm)	1.35 in. (3.43 cm)	3.5 lb. (1.6 kg)



CHECKERS™

620 Compton St
Broomfield, CO 80020

PHONE: (800) 438-9336

FAX: (720) 890-4858

EMAIL: sales@checkers-safety.com

www.checkers-safety.com

Ver: 7/19

A PRODUCT OF:



Justrite Safety Group is the leading source of safety equipment for flammables and hazardous materials storage and handling, asset protection, environmental protection spill containment, absorbents, specialized chemical storage, cable management, safety showers, eye/face washes, matting, and vehicle safety equipment. Learn more at Justrite.com, Checkers-safety.com, and Notrax.com.