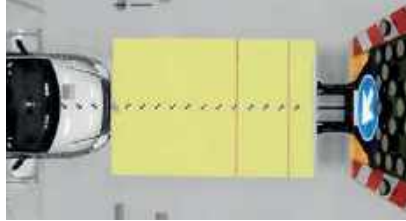


DUAL PROTECTION IN ONE SYSTEM

Nissen's mobile crash protection systems combine two important functions: the necessary advance warning or barrier deployment for traffic lanes and protection of personnel, road users and service vehicles in the event of a rear-end collision.

Each of Nissen's crash protection systems consists of three components: a warning panel allowing of customisable configuration, a crash absorber to absorb kinetic energy, and a docking station that can be fitted to any of your service vehicles. The system is folded up out of the way during transportation. Once on site, the service vehicle is moved into the relevant position, the crash absorber is folded down via electrohydraulic action, and the warning panel is activated. Advantage: No additional personnel are needed for operation of mobile crash protection systems. In addition, Nissen's crash protection systems require very little maintenance.



The classic

RAMBO II

Proven across the world: RAMBO II incorporates the most popular approach to the design of mobile crash cushions. Its advantages have already been demonstrated in numerous rear-end collisions.

The RAMBO II crash absorber consists of a lightweight aluminium cushion incorporating internal honeycombs that yield on impact. In the event of a collision, these absorb the kinetic energy, thereby reducing the risk of injuries and damage to the service vehicle. The RAMBO II is fitted to the vehicle using a docking station plus electrohydraulic device for the folding action.

When the system is not in use, the hydraulics hold the cushion out of the way in a vertical position. For the RAMBO II, service vehicles from 7.5 tonnes upwards are recommended. In some countries, it is actually a requirement that such vehicles be used.

