



## HUSQVARNA A 25

# SMART, PORTABLE AIR CLEANER

The A 25 is part of our latest generation of air cleaners, developed with a whole new level of intelligence and mobility to meet customer demands. Recommended for spaces up to 25 m<sup>2</sup> in a single-use set up.

A colour-coded visual alarm clearly indicates the filter status. The innovative units are compact and stackable – an advantage when it comes to maintenance, transportation and handling. The A 25 can be used as both an air cleaner and a negative air machine. Two- or three-stage filtering captures various particles commonly produced on a construction site, including silica dust and wood dust, as well as dust from metal, gypsum and other materials. The active carbon filter is available as an option.

### Included

- ✓ Pre-filter
- ✓ HEPA H13 essential filter

### Not included

- ✗ Washable pre-filter
- ✗ H14 essential filter
- ✗ Active carbon filter

## FEATURES



### MULTI-LEVEL MONITORING OF FILTER SATURATION

The LED light bar on the front of the machine provides a real-time visual indication of the filters' saturation level, represented by two colour bars. This helps you to ensure optimal air cleaning and plan filter maintenance.



### WATER-PROTECTED FOR EASY DECONTAMINATION

The air cleaner has an IP54 classification, which means you can decontaminate it easily by hosing it down with water. Filters must be removed before washing the air cleaner with water.



### EASY TO TRANSPORT

Handles on all sides make the air cleaner easy to carry. The unit is also stackable to save space.



### EASY TO MAINTAIN

The smart and robust design allows easy access for service and maintenance, as well as making decontamination and filter changes easier.

## FEATURES

### SMART STORAGE

Integrated storage pocket on the back for smaller items such as cords.

### THOROUGHLY TESTED ESSENTIAL FILTERS

To verify that particles are always filtered correctly, all essential filters are tested individually at each air-

cleaner model's maximum airflow. Each filter complies with the filtration level at maximum airflow stated on the filter: M/H-class, HEPA, H13, H14.

## TECHNICAL SPECIFICATIONS

All specifications A 25	Art.no: 970 65 23-01	North America model Art.no: 970 65 23-02	UK model Art.no: 970 65 23-03
Voltage	220-240 V	110-120 V	110-120 V
Max current	1.0 A	2.6 A	1.9 A
Phases	~1	~1	~1
Max power	230 W	312 W	209 W
Max airflow HEPA*	600 m <sup>3</sup> /hr	700 m <sup>3</sup> /hr / 413 cfm	600 m <sup>3</sup> /hr
Max airflow HEPA + Pre-filter*	540 m <sup>3</sup> /hr	594 m <sup>3</sup> /hr / 350 cfm	500 m <sup>3</sup> /hr
Max airflow HEPA + Pre-filter + Carbon filter*	400 m <sup>3</sup> /hr	491 m <sup>3</sup> /hr / 290 cfm	410 m <sup>3</sup> /hr
Pre-filter area	0.34 m <sup>2</sup>	0.34 m <sup>2</sup> / 3.7 ft <sup>2</sup>	0.34 m <sup>2</sup>
Total essential filter area	3.0 m <sup>2</sup>	3.0 m <sup>2</sup> / 32.3 ft <sup>2</sup>	3.0 m <sup>2</sup>
Length	410 mm	410 mm / 16.1 in	410 mm
Width	340 mm	340 mm / 13.4 in	340 mm
Height	430 mm	430 mm / 16.9 in	430 mm
Weight	13.5 kg	13.5 kg / 29.9 lbs	13.5 kg
IP class	IPX4	IPX4	IPX4
Delivered with	1 x H13 Essential filter 1 x Pre-filter 1x Pre-filter holder 1 x Outlet bar	1 x H13 Essential filter 1 x Pre-filter 1x Pre-filter holder 1 x Outlet bar	1 x H13 Essential filter 1 x Pre-filter 1x Pre-filter holder 1 x Outlet bar

\* Actual airflow value can differ up to 5% due to manufacturing tolerances.

## ACCESSORIES



**PRE FILTER 15-PACK**  
Art.no: 547 67 67-01



**H13 ESSENTIAL FILTER**  
Art.no: 546 54 97-01



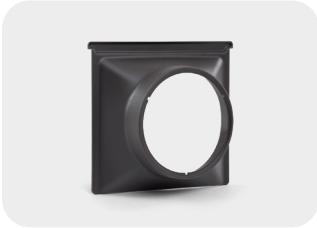
**H14 ESSENTIAL FILTER**  
Art.no: 546 54 97-02



**FILTER CARBON FILTER 5-PACK**  
Art.no: 547 67 62-01



**WASHABLE PRE-FILTER 5-PACK**  
Art no: 540 21 55-01



**INLET ADAPTER - A25**  
Art.no: 548 71 26-01

 **Husqvarna**  
husqvarnaconstruction.com

Copyright © 2025 Husqvarna AB (publ). All rights reserved. Husqvarna and other product and feature marks are trademarks of the Husqvarna Group or its licensors. We reserve the right to make changes in technology and specifications without prior notice.